



*2016  
Inductees*

2017

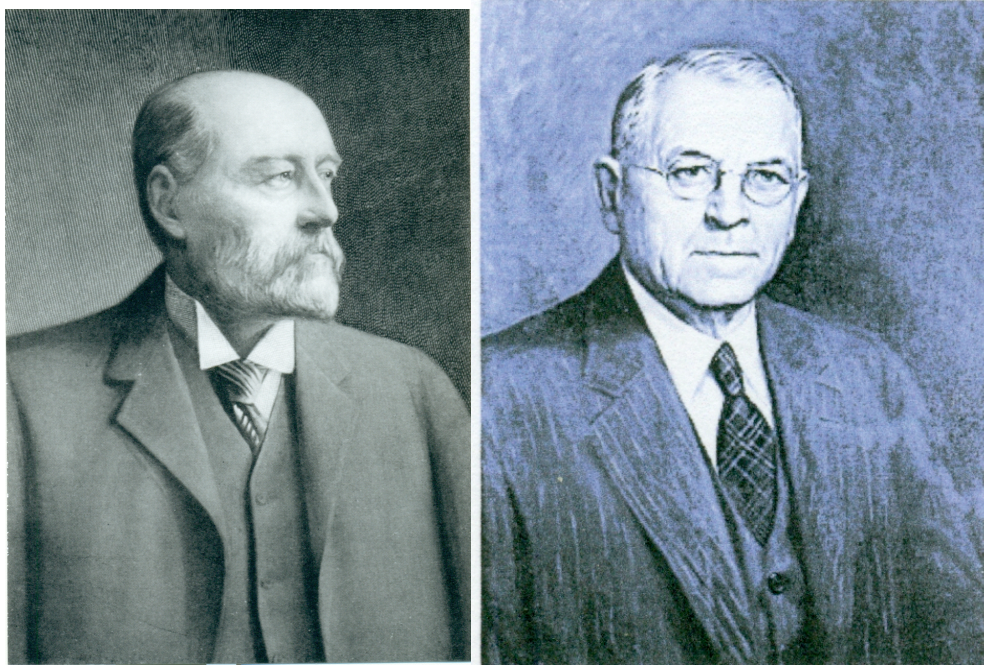
INDUCTEES



**RICHARD ALBERT & HENRY NOEL GIBSON**  
1840-1911                      1878-1966

**DONALD GUEST GRIEVE**  
1934-2008

**MEREDITH ROBB**  
1940-2016



**RICHARD ALBERT & HENRY NOEL GIBSON**

**(1840-1911)**

**(1878-1966)**

*The Gibson family settled near Delaware, Ontario on a farm they named after Richard's Father's home in England; Belvoir Farm. Richard was an appointed member of the Ontario Agriculture Commission (1880), the first Canadian President of the American Shropshire Breeders Assoc. (1907) and president of the Dominion Shorthorn Assoc. He was inducted into the Saddle & Sirloin Hall of Fame associated with Chicago's famed International Stock Show in the early 1900s. Richard was active in the Delaware Fair and a writer for The Farmers Advocate. His only son, Henry was also inducted into the Saddle & Sirloin in 1947. Henry "Noel" Gibson was a well-known judge; notably at the International Live Stock Exposition and the British Royal. He was also a President of the American Shropshire Assoc. He spent his work career managing stock farms in the US, as well as the family farm in Ontario.*

## **RICHARD ALBERT & HENRY NOEL GIBSON**

**(1840-1911)**

**(1878-1966)**

Richard Albert was born in England in 1840 on his family's farm. He attended boarding school, then returned home to work with his father until the fall of 1861 when he immigrated to Canada. He married Elizabeth Robinson in 1863 and soon after moved to Long Island, USA where he managed the New York Mills farm. In the early 1870s they returned to London Township where they settled and farmed next to the Robson family near Denfield. In 1886 Richard bought an estate near Delaware, Ontario which they named after Richard's Father's home in England; Belvoir Farm.

Richard was appointed as a member of the Ontario Agriculture Commission in 1880, in 1907 was elected the first Canadian President of the American Shropshire Breeders Association, and was the president of the Dominion Shorthorn Association. In the early 1900's He was inducted into the Saddle and Sirloin Hall of Fame associated with Chicago's famed International Stock Show at which He had exhibited and judged several times. Richard was active in the Delaware Fair and a writer for The Farmers Advocate.

Richard's only son, Henry Noel was born in 1878 and raised on the Belvoir farm. In 1906 he married and they left Canada to manage the Altamont Stock Farm in Millbrook New York. At the death of his father in 1911, the couple moved back to Ontario for a short time before moving to New Jersey to manage another farm. In 1915 they partnered on a farm operation in Illinois until the 1920s when the family returned to London Township once again. Henry "Noel" was also inducted into the Saddle & Sirloin in 1947 where his portrait hangs next to his father's. Henry "Noel" Gibson was a well-known judge; notably at the International Live Stock Exposition and the British Royal. He was also a President of the American Shropshire Association.

We gather here today to honour this father-son duo of stockmen who through their lifetimes helped bring Middlesex County ,its stock and its stockmen the attention they deserve on an international stage. We do this by at this time inducting **Richard Albert** and **Henry Noel Gibson** to the Middlesex County Agricultural Hall of Fame



**DR. DONALD GUEST GRIEVE**

**(1934-2008)**

*Dr. Don Grieve was born in Westminster Township, growing up on his family's Century Farm. Don's early experience developed his lifelong interest in dairy farming and improvements in cattle management methods. Don attended the Ontario Agriculture College majoring in Animal Husbandry; graduating 1955 before continuing in Graduate Studies earning his Master's Degree. He joined the Ontario Department of Agriculture working in Elgin & Huron Counties. In 1962 Don accepted a position as Assistant Professor in the Animal Husbandry Dept. at O.A.C. In 1967 Don was granted leave to study at Cornell University in Ithaca, New York where he received a Ph.D. degree in dairy cattle nutrition. Farmers benefited greatly from his years of research on dairy cattle nutrition. He also contributed to agriculture internationally as a team leader on the Guelph/Ghana (West Africa) Project and research in the Netherlands. Dr. Grieve served as Chairman of the Dept. of Animal & Poultry Science at the University of Guelph from 1988 until he retired in 1994.*

## **DONALD GUEST GRIEVE**

1934-2008

Donald Guest Grieve was born in 1934 in Westminster Township, Middlesex County. Don grew up on the Grieve Century farm near Wilton Grove in Westminster Township. The farm was established by his Great-Great Grandfather, Elliot Grieve, in 1819. In his early years Don attended a one-room elementary school (SS # 7 Westminster) at Pond Mills. Later he commuted by rail on the London & Port Stanley Railroad to secondary school at London Central Collegiate.

While growing up he assisted on the family's mixed farm which evolved into a specialized dairy operation. Don's father, John McDougall Grieve established the Newlands herd of purebred Holstein cattle in 1933. This early experience helped develop Don's lifelong interest in dairy farming and the improvement of dairy cattle management methods. Don's interest in agriculture led him to enroll in the Ontario Agriculture College (OAC) where he majored in Animal Husbandry.

While at OAC, he spent his summers working on the family farm with the intention of returning to farming as a career. However, Guelph also presented other exciting agriculture opportunities. Operation of the family dairy farm was carried on by Don's brother Bill (William R. Grieve). In 1955 he graduated from the OAC with a B.S.A. (Agriculture) He continued in Graduate Studies at Guelph, receiving a Master's degree for his research on relationships of body conformation to production of Holstein-Friesian cows.

In 1957 Don joined the Ontario Department of Agriculture where he served as an Assistant Agricultural Representative in Elgin County and later as Associate Agricultural Representative in Huron County.

On November 22, 1959 Don married Karen Paterson. Don & Karen had three sons: Craig (Janice), Douglas (Nancy) and David (Anne).

In December, 1962 Don accepted a position as Assistant Professor in the Department of Animal Husbandry, OAC. In 1967 Don was granted leave from the (by then) University of Guelph to study at Cornell University in Ithaca, New York where he received the Ph.D. degree for his research in dairy cattle nutrition. Dr. Grieve returned to teaching and research at Guelph before being seconded in 1973 to the University of Ghana in West Africa for two years. During the second year, he was Team Leader on the Guelph/Ghana Project which trained many agricultural personnel and contributed to the long-term goal of improved food security in Ghana. Much of the research conducted by Dr. Grieve and his graduate students addressed very real problems faced by dairy farmers. Many studies explored nutrient sources and utilization as well as methods to improve the performance and efficiency of dairy cattle. In recognition of his research and teaching, Dr. Grieve was promoted to Associate Professor in the Dept. of Animal and Poultry Science in 1980 and Professor in 1982. During 1984, he was a visiting research scientist at the Agricultural University, Wageningen, Netherlands.

He served as Chairman of the Department of Animal and Poultry Science from 1988 until his retirement in 1994. As Department Chairman, Dr. Grieve oversaw one of the largest research programs in the University. He developed strong relationships with the private sector and increased research funding support from private industry in addition to government sources.

Many of his research findings were published in scientific journals. He was also generous in sharing his expertise directly with farmers and industry through popular publications and other extension activities. He taught hundreds of undergraduate and graduate students, many of whom went on to become leaders in the animal agriculture industry.

Don was respected for the many significant contributions he made to agriculture. He is fondly remembered as an outstanding researcher, modest about his accomplishments; a dedicated teacher and an administrator who was always a true gentleman.

For his long time service to the improvement of agriculture we at this time induct **Donald Guest Grieve** into the Middlesex County Agricultural Hall of Fame .





**MEREDITH ROBB**

**(1940-2016)**

*Meredith Robb was very active in many Middlesex County community organizations. He volunteered with the Ilderton Agricultural Society, Home & Farm Safety Council, Federation of Agriculture, Pork Producers and 4-H. Meredith graduated from the Western Ontario Agriculture School in 1958, and farmed on his great-great grandfather's land northwest of London. Meredith was awarded a Nuffield Agricultural Travelling Scholarship in 1974 and spent 6 months studying agriculture in Europe and the UK. As part of his dedication to Junior Farmers he was a Provincial Director and a delegate to Great Britain. Meredith was well-known in the county and province for his square dancing; as a participant, caller and judge. His various roles and involvement as part of volunteer boards, contributed greatly to agriculture in Middlesex County and is being recognized in this nomination.*

## **Meredith Robb**

**(1940-2016)**

Meredith Robb was born and spent most of his life on the farm that his great-great grandfather carved out of the bushlands northwest of London, near Ilderton. During his youth he was involved in rural organizations such as 4-H and in Junior Farmers where he served as a Provincial Director as well as being chosen as a delegate to Great Britain for six weeks. Meredith graduated from the Western Ontario Agriculture School in 1958, and farmed on his great-great grandfather's land. Meredith was awarded a Nuffield Agricultural Travelling Scholarship in 1974 and spent 6 months studying agriculture in Europe and the UK.

Meredith was well-known in the county and across the province for his interest in square dancing; which began in his teens. He danced, called, and later coached, for sets in many competitions in Jr. Farmers. In later years, he has had the opportunity of being a judge at places like OAC College Royal, Dundalk, and Toronto Royal Winter Fair. For a few years, he was coordinator of the Square Dance and Step Dance competitions at the Western Fair in London. He called at community dances, monthly at London's Olde Tyme Club, as well as for a local "Heritage Band". Square Dancing was Meredith main 'hobby' and he thoroughly enjoyed the time he spent with this favourite activity.

Meredith was very active in many grassroots Middlesex County community organizations. His involvement, various roles and executive positions contributed greatly to agriculture in this county. Some of these include the Ilderton Agricultural Society, Home & Farm Safety Council, Federation of Agriculture, Pork Producers and Middlesex Soil & Crop Association. Meredith was a 4-H leader, a Lions Club Member and served on the Coldstream Fire Department.

The Middlesex Federation of Agriculture nominated Meredith to recognize his significant contributions to agriculture here in Middlesex. Although his reach travelled outside of Middlesex, it is his thousands of volunteer hours on boards, leading associations, giving of his time and sharing his passion that is being recognized in this nomination. Meredith is an outstanding example of a valuable member in our farming community, who worked quietly in the background, making a difference and ensuring that our rural organizations thrived.

Meredith was a part of the fabric of our community and today we recognize his dedication to that community by at this time inducting **Meredith Robb** into the Middlesex County Agricultural Hall of Fame